

Cost Effective Clean Seabed

- Solution to recovering items of debris dropped or lost during the operational field life
- Deployment and recovery possible from a wide range of fishing vessels
- Safe recovery of single items up to 1000kg
- Reduced time required to carry out and complete Over trawl trials

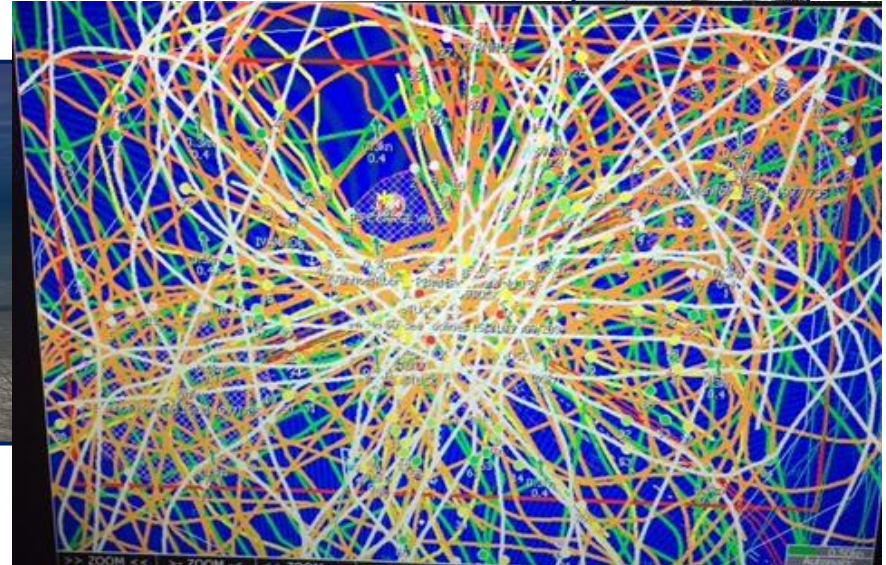
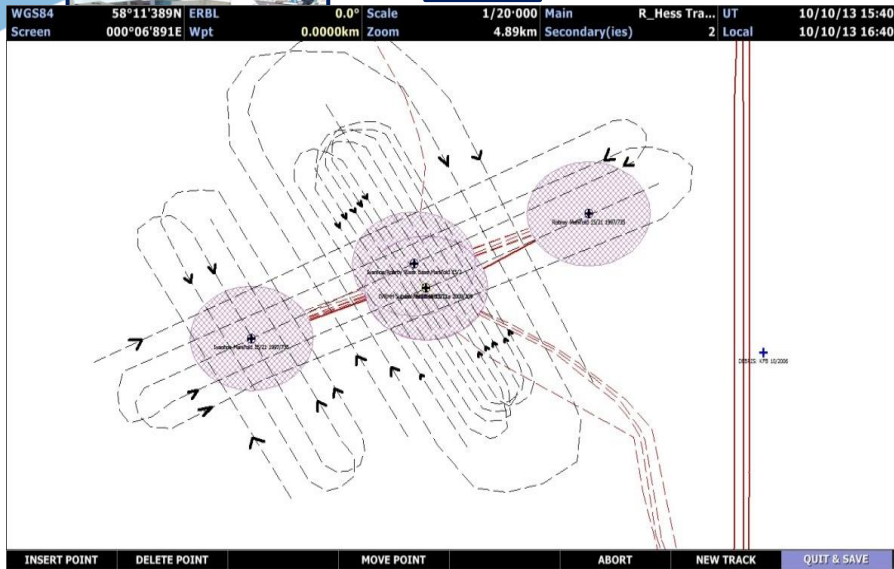


The Chain Mat

- Designed in 2000 following issues post trenching with clay berms
- Used by 35 different fishing vessels through SFFSL on 38 different Client projects
- Berm removal, Debris clearance and post decommissioning sign off



Debris Recovery 2000 - 2015



2016 and beyond

- Larger vessels for larger items of debris
- Additional deck storage space
- Greater lifting capabilities
- Mini ROV deployment



2016 and beyond, Large diameter pipelines and bundles



How can we remove these safely from the seabed?



Closing Video