



OSPAR 98/3

John Watt
Scottish Fishermen's Federation

www.sff.co.uk



One Size Fits All!

Contrary to what retail stores led us to believe, clearly one size does not fit all!

- Is this true within the fishing industry?
- Is this true within the Oil & Gas Industry?



The DIVERSE Scottish Fishing Fleet

- Pelagic – Herring & Mackerel
- Whitefish – Cod, Haddock, Saithe,
- Prawns/ Nephrops
- Scallop
- Squid
- Static gear crab & Lobster



www.sff.co.uk

It's good to be Different!

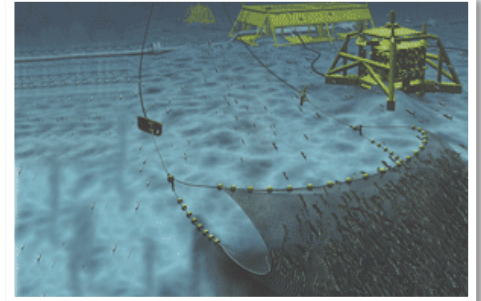
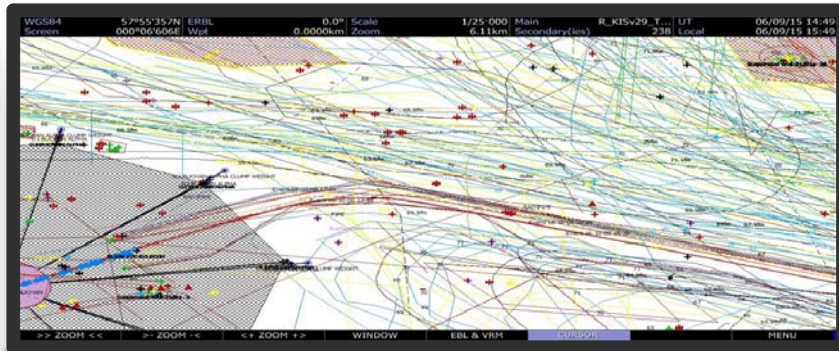
- Different Vessels target different species
 - Different species require different types of fishing gear
 - Different species are only be caught on certain seabed type
 - Trawl nets are designed differently to maximise returns from different seabed's
-
- **Target species determines how Vessel's operates in or around subsea infrastructure.**



Target species - Subsea infrastructure

Vessels targeting certain whitefish species will:

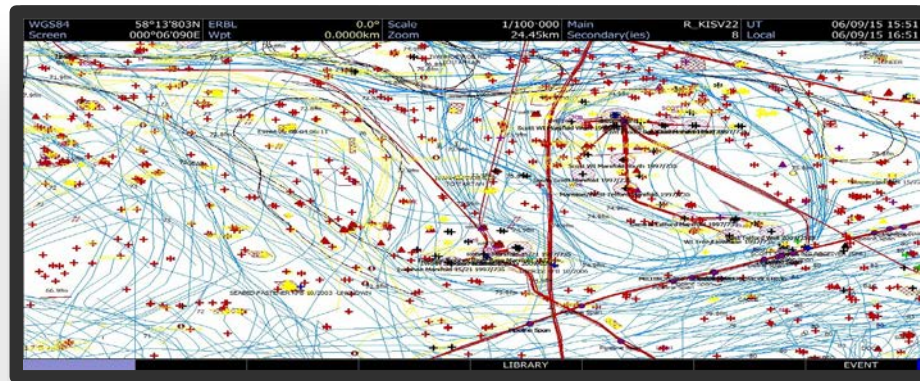
1. Trawl along the direction of proud pipelines to catch any fish feeding or sheltering
2. Trawl as close/safe as possible to subsea structures located out with 500m safety zones



Target species - Subsea infrastructure

Vessels operating in a soft muddy seabed will:

1. Avoid crossing subsea pipelines unless trawling from one area to another.
2. Cross pipelines when possible at 90° to avoid destabilisation of fishing gear also risk of encountering a snagging



Target species - Subsea infrastructure

Vessels targeting Scallops will:

1. Avoid crossing any areas of rock dump
 - Causes damage to the catch
 - Increased risk to Vessels stability by recovering rock to the vessels top deck



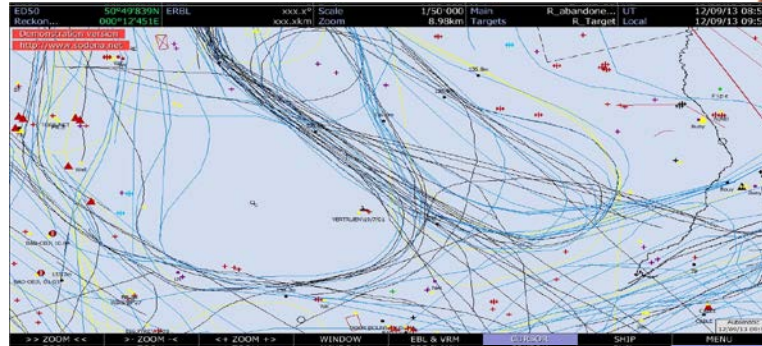
Conclusion:

The fishing industry although diverse, all agree regarding what must be avoided:

- An increase in subsea snagging's as infrastructure breaks up in the future
- Increased risk to vessels and back deck crews
- High levels of rock placement used as a cover up/protection

Fishing industry preferences:

- Where possible areas of high fishing importance returned
- Subsea pipelines which are already buried to be left in place
- Where structures or footings are left behind, these must be well marked on charts/FishSAFE but also monitored for changes over a agreed time period.





OSPAR 98/3

John Watt
Scottish Fishermen's Federation

www.sff.co.uk

